



SOCIÉTÉ DE LA TOUR EIFFEL IS STRENGTHENING ITS MANAGEMENT TEAM WITH TWO NEW APPOINTMENTS

- **Anne Gillet-Feillon has been appointed Director of Portfolio Management**
- **Khadija Jaafar has been appointed Legal Director**

Two new directors are joining the Executive Committee of Société de la Tour Eiffel: Anne Gillet-Feillon and Khadija Jaafar. Their respective positions are Director of Portfolio Management and Legal Director, and they will each play a key role in the implementation of Société de la Tour Eiffel's new strategy.

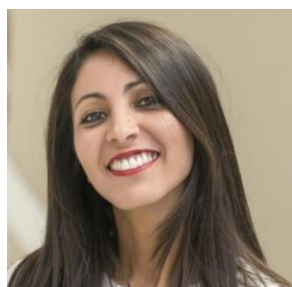
In a newly created role, Anne Gillet-Feillon will head up the Portfolio Management department, which includes the Asset Management, Technical and Rental Management teams.

Khadija Jaafar will be the new Legal Director. She will provide legal support and advice to the operational teams on transactions and development operations and oversee activities relating to company law for all group companies.

"We are delighted that Anne and Khadija are joining the management team at Société de la Tour Eiffel. These appointments are aligned with our new strategy and confirm our intention to strengthen our teams to meet our challenges and objectives", commented Christel Zordan, Chief Executive Officer of Société de la Tour Eiffel.



Anne GILLET-FEILLON, 53, has more than 20 years' experience in real estate asset and project management. Anne began her career at First Paris Properties, before moving to CBRE Global Investors as Director of Asset Management. She then joined Constructa Asset Management as Deputy CEO, and was subsequently appointed Head of Real Estate Europe at Peref. Anne is a Member of the Royal Institution of Chartered Surveyors.



Khadija JAAFAR, 42, has a Master's in Law and the ICH Diploma. Khadija began her career in 2004 as Legal Adviser at Oceanis Promotion. In 2007, she joined Société Générale's real estate leasing subsidiaries Genefim-Sogebail-Sogefimur as Head of Legal Affairs, before moving to Compagnie de Phalsbourg in 2011 to restructure and manage its legal department. In 2016, Khadija became Legal Director at Apsys, then joined the Napaqaro group (Buffalo Grill, Courtepaille, Popeyes) in the same role.

About Société de la Tour Eiffel

Société de la Tour Eiffel is an integrated property company with €1.8 bn in assets and a powerful service culture. An agile operator, it works across multiple asset classes (offices, logistics, managed residential, retail) located in Greater Paris and the major regional metropolises. It is active throughout the real estate cycle, supporting its tenants, companies of all sizes and sectors, via a rigorous direct management process.

Société de la Tour Eiffel takes a pro - active cross - disciplinary approach to CSR that is fully integrated with its business strategy.

Société de la Tour Eiffel is listed on Euronext Paris (Compartment B) - ISIN Code: FR0000036816 - Reuters: TEIF.PA - Bloomberg: EIFF.FP - Indexes: IEIF Foncières, IEIF Immobilier France. www.societetoureiffel.com

CONTACTS

MEDIA RELATIONS

Laetitia Baudon

Consulting Director - Agence Shan

+ **33 (0)1 44 50 58 79**

laetitia.baudon@shan.fr
